

Miniatures in Minutes

Terrie Sandelin

<http://www.terriesandelin.com>

<http://terriesandelin.blogspot.com/>



13 Square Foundation: Miniature Quilt Pincushions

Size: 5" to 6"

I always look for new ways to use the foundations from [Miniatures in Minutes](#) (C&T Publishing). These pincushions use only part of the foundation, with four pincushions to a foundation. Very easy. Very fun. In addition to the supplies discussed in [Miniatures in Minutes](#), you'll need pincushion filler. I like to use crushed walnut shells. I find them at the local pet shop (packaged as terrarium ground cover for lizards – go figure).

The cutting directions I give here for the borders work with the 1/8" border technique I use (directions provided below). With this technique, I cut the fabric wider than I need and then trim after sewing. If you cut the dimensions listed in these directions, be sure to use the technique I describe or your narrow borders will be (relatively speaking) *wide* borders instead!

Some of the pincushions use only one narrow border, and some use two. I've listed cutting directions for both variations.

Six Patch Diagonal Row Miniature Quilt Pincushions

Cutting Directions for Foundation: Cut each patch 1" square.

The fabric requirements listed below are for each "quilt" individually since I made each one unique.

A – 1, B – 2, C – 3, D – 4, E – 5, F – 6, G – 5, H – 4,

I – 3, J – 2, K – 1

Even though I created a Quilt Layout Diagram for these pincushions, I actually just laid out the patches in the pattern I wished, and set them up next to my sewing machine. (I've mentioned using this technique before. It works fine as long as nothing comes along to disrupt your patches – so, if you decide to use this method, DON'T SNEEZE!)



A	B	C	D	E	F		A	B	C	D	E	F
B	C	D	E	F	G		B	C	D	E	F	G
C	D	E	F	G	H		C	D	E	F	G	H
D	E	F	G	H	I		D	E	F	G	H	I
E	F	G	H	I	J		E	F	G	H	I	J
F	G	H	I	J	K		F	G	H	I	J	K
A	B	C	D	E	F		A	B	C	D	E	F
B	C	D	E	F	G		B	C	D	E	F	G
C	D	E	F	G	H		C	D	E	F	G	H
D	E	F	G	H	I		D	E	F	G	H	I
E	F	G	H	I	J		E	F	G	H	I	J
F	G	H	I	J	K		F	G	H	I	J	K

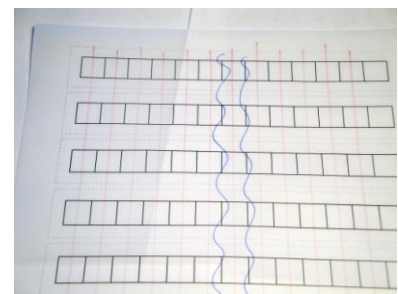
Quilt Layout Diagram

Here they are, ready to sew:



Prepare the foundation as usual. Here it is with the patches added but before the rows are joined.

Tip: There are two of the vertical patch columns you don't sew – the one that goes through the last of the first set of six patches, and the one that lies beneath the first of the second set of six patches. Why do I mention this? Why else? I sewed through the last patch of the first "blocks" and then, while shaking my head over how dumb that was, I proceeded to sew through the first patch of the second set of blocks. Yikes! I recommend drawing a squiggly line through these lines to remind yourself *not* to sew them.



Foundation with Squiggle Lines – Don't Sew These

Here's the foundation with the rows joined. Notice that you don't join the rows that border onto the middle row with no patches in it.

Remove paper and press as usual.



Border Cutting Directions

6-patch with one narrow border:

Inner Border:

2 @ 1" by 3 1/2"

2 @ 1" by 4 1/2"

Outer Border:

2 @ 1 1/2" by 4 1/2"

2 @ 1 1/2" by 5 3/4"

Backing Fabric:

5 3/4" square



6-patch with two narrow borders:

First Inner Border:

2 @ 1" by 3 1/2"

2 @ 1" by 4 1/2"

Second Inner Border:

2 @ 1" by 4 1/2"

2 @ 1" by 4 3/4"

Outer Border:

2 @ 1 1/2" by 4 3/4"

2 @ 1 1/2" by 6"

Backing Fabric:

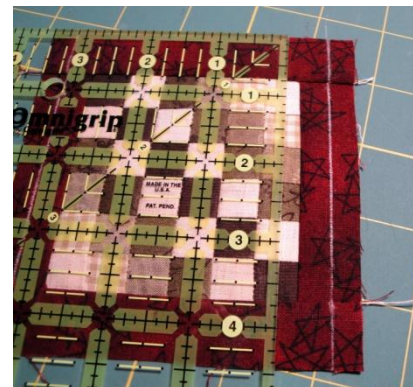
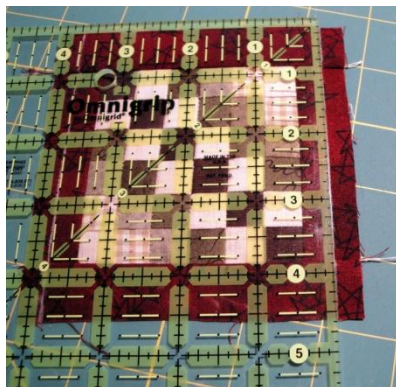
6" square



Adding an 1/8" Border

With this method, you cut your borders slightly wider than you need, then trim after sewing.

1. Add initial set of borders.
2. Once the borders are added, line up your ruler at the 3/8" mark along the seam line and draw a line.



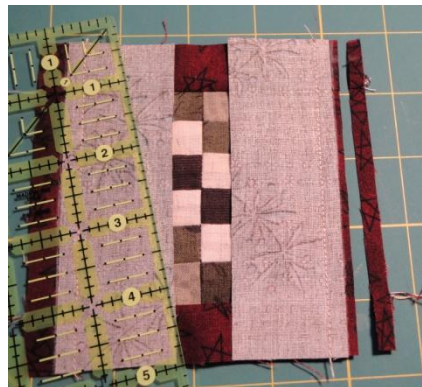
3. Dab dots of glue just inside the drawn line (as always, I use Roxanne's Glue-Baste-It) and then lightly press the border strip in place along the drawn line.



4. Line up a quarter-inch foot along the edge of the border fabric and sew. (Please forgive the shift in fabric – I forgot to take a photo with my taupe pincushion).



5. After the seams are sewn, trim the excess fabric. I leave an eight inch overlap so there is a smoother fold over.



- Press open. Continue to add borders using the same method. It won't matter if you are adding another narrow border or the outer border – the technique is the same.

Five Patch and Trip Around the World Miniature Quilt Pincushions

Cutting Directions for Foundation: Cut each patch 1" square.

The fabric requirements listed below are for each "quilt" individually since I made each one unique . Notice that with this quilt layout diagram, there are three 5-patch quilts and one Trip Around the World.

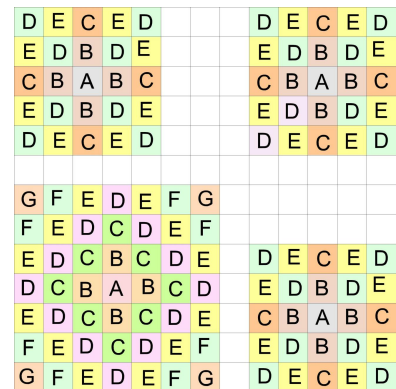


Five Patch:

A – 1, B – 4, C – 4, D – 8, E – 8

Trip Around the World:

A – 1, B – 4, C – 8, D – 12, E – 12, F – 8, G – 4



Quilt Layout Diagram

Prepare the foundation as usual. The first photo shows what the foundation looks like after the patches are added but before the rows are joined. The second shows the foundation after the rows are joined. Notice that once again, not all the rows are joined. In particular, note that where the Trip Around the World bumps into the top row of the 5-patch, you sew the row only through the Trip Around the World (the paper folds over so it is a bit difficult to make out in the photo, but the paper is simply folded, not sewn).



Border Cutting Directions

5-patch with one narrow border:

Inner Border:

2 @ 1" by 3"

2 @ 1" by 4"

Outer Border:

2 @ 1 1/2" by 4"

2 @ 1 1/2" by 5 1/4"

Backing Fabric:

5 1/4" square



5-patch with two narrow borders:

First Inner Border:

2 @ 1" by 3"

2 @ 1" by 4"

Second Inner Border:

2 @ 1" by 4"

2 @ 1" by 4 1/2"

Outer Border:

2 @ 1 1/2" by 4 1/2"

2 @ 1 1/2" by 5 3/4"

Backing Fabric:

5 3/4" square



Trip Around the World with two narrow borders:

First Inner Border:

2 @ 1" by 4"

2 @ 1" by 5"

Second Inner Border:

2 @ 1" by 5"

2 @ 1" by 4 1/4"

Outer Border:

2 @ 1 1/2" by 5 1/4"

2 @ 1 1/2" by 6 1/2"

Backing Fabric:

6 1/2" square



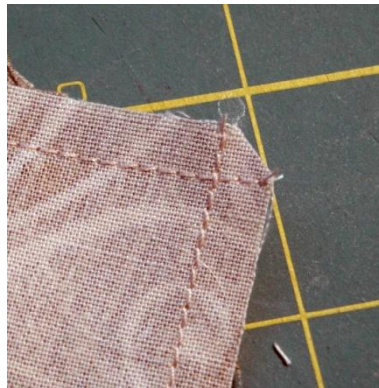
Follow directions given above for adding the narrow 1/8" borders

Finishing the Pincushion

1. Line up the backing fabric and the pincushion top, right sides together.
2. Sew a quarter inch seam around all four sides, leaving an opening of approximately two inches to turn.



3. Trim the corners.



4. Turn right side out. I like to press at this stage since it gives me a crisp fold where I will need to sew together the opening after stuffing.



5. Fill the pincushion with the stuffing of your choice.
6. Slip stitch the opening closed.
7. Sit back and admire!



Quilt Layout Diagram: 13 Square Pincushions, Diagonal Rows

1	A	B	C	D	E	F		A	B	C	D	E	F
2	B	C	D	E	F	G		B	C	D	E	F	G
3	C	D	E	F	G	H		C	D	E	F	G	H
4	D	E	F	G	H	I		D	E	F	G	H	I
5	E	F	G	H	I	J		E	F	G	H	I	J
6	F	G	H	I	J	K		F	G	H	I	J	K
7													
8	A	B	C	D	E	F		A	B	C	D	E	F
9	B	C	D	E	F	G		B	C	D	E	F	G
10	C	D	E	F	G	H		C	D	E	F	G	H
11	D	E	F	G	H	I		D	E	F	G	H	I
12	E	F	G	H	I	J		E	F	G	H	I	J
13	F	G	H	I	J	K		F	G	H	I	J	K

Patch Requirements: Patch size (unfinished) 1 inch square

Each Pincushion separately:

A – 1, B – 2, C – 3, D – 4, E – 5, F – 6, G – 5, H – 4, I – 3, J – 2, K – 1

Quilt Layout Diagram: 13 Square Pincushions, Five Patch and Trip Around the World

1	D	E	C	E	D				D	E	C	E	D
2	E	D	B	D	E				E	D	B	D	E
3	C	B	A	B	C				C	B	A	B	C
4	E	D	B	D	E				E	D	B	D	E
5	D	E	C	E	D				D	E	C	E	D
6													
7	G	F	E	D	E	F	G						
8	F	E	D	C	D	E	F						
9	E	D	C	B	C	D	E		D	E	C	E	D
10	D	C	B	A	B	C	D		E	D	B	D	E
11	E	D	C	B	C	D	E		C	B	A	B	C
12	F	E	D	C	D	E	F		E	D	B	D	E
13	G	F	E	D	E	F	G		D	E	C	E	D

Patch Requirements: *Patch size (unfinished) 1 inch square*

Each pincushion separately:

Five Patch: A – 1, B – 4, C – 4, D – 8, E – 8

Trip Around the World: A – 1, B – 4, C – 8, D – 12, E – 12, F – 8, G – 4