

Terrie Sandelin

Miniatures in Minutes

<http://www.terriesandelin.com>

<http://terriesandelin.blogspot.com/>

Tumbler Foundation: Tote Bag

Finished Foundation: 7" by 7"

Approximate size of bag:

12" by 10" by 6"



This project uses the Tumbler foundation from *Miniatures in Minutes* (published by C & T Publishing). I think pockets on a tote bag are a great way to show off some miniature piecing!

Tumbler Pocket Fabric Requirements and Directions: *Use the directions from Miniatures in Minutes to make up two tumbler foundations.*



Tote Bag Fabric Requirements and Cutting Directions:

Outer bag main body, cream linen: 1/3 yard

- Cut two at 10" by 19"

Outer bag bottom, medium brown linen: 1/4 yard

- Cut two at 5" by 19"

Shoulder Straps, dark brown linen: 1/2 yard (depending on width of fabric)

Cut two at 5" by 56" (but then I'm short – you might want a little more length)

Lining, brown print: 1 yard (The lining is sewn such that it creates the faux binding that will show on the outer bag)

- Cut two at 15" by 19"
- Cut two at 9 1/2" by 9 1/2" (for pocket linings)
- Cut two at 6 1/2" by 12 1/2" (for bottom stiffening sleeve)

Inner Pockets, light contrasting brown: 1/2 yard

- Cut two at 12" by 19 1/2"

Outer Pocket Binding, taupe: scraps

- Cut two at 1 1/2" by 8"

Other Supplies:

Woven Interfacing: 1/2 yard (depending on width of fabric)

- Cut two at 10" by 19"
- Cut two at 5" by 19"

Fusible Fleece: 3/4 yard

- Cut two at 14 1/2" by 18 1/2"
- Cut two at 8 1/2" by 8 1/2" (for pockets)

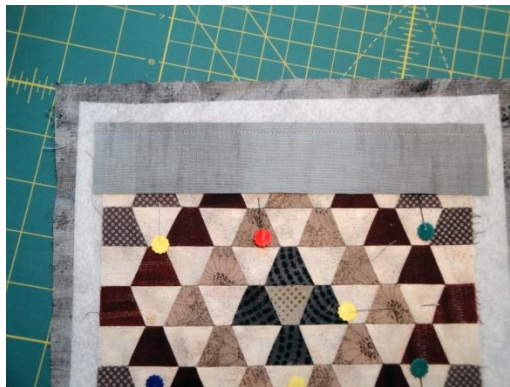
5 1/2" by 11" matt board or a [Bag-E-Bottom](#), Size D

Making the Pockets:

1. Iron the fusible fleece to the wrong side of the lining fabric.
2. Make a quilt sandwich of the lining, fleece, and foundation.



3. Place the binding strip across the top of the foundation. Stitch a quarter inch seam. (I use a single fold binding and the directions that follow are for a single fold. You could, of course, use a double fold if that is your preference.)



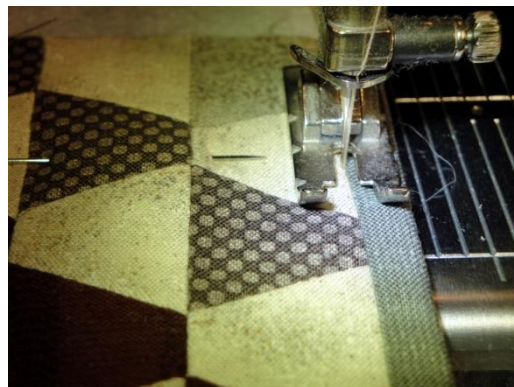
4. Trim off the extra fleece and lining.



5. Iron the binding back away from the foundation. Now, flip over and work from the back side. Fold the binding strip so that it is even with the edge of the quilt sandwich. Press to create a crisp fold.



6. Now fold it over again so that it covers the row of stitching. I place a few glue dabs to hold the binding in place temporarily, but you could also use pins. After the binding is folded over and in place, once again flip over to the foundation side of the quilt sandwich. Stitch in the ditch along the edge of the binding.



7. Baste stitch along the edges of the sides and bottom and then trim off the excess quilt sandwich.



8. Repeat with the remaining foundation.



Making the Straps: *(make two straps)*

9. Draw a line 1 1/4" in along the long edge of the strap fabric.



10. Iron the long strip of fusible fleece onto the middle of the strap, lining up the edge with the drawn line.



11. Iron both side edges in over the fleece.



12. Fold the two halves together; then top stitch along both edges. I like to add another couple rows of stitching to the inside as well for a neat and polished look.



Making the Outer Bag: Seam allowances are 1/4".

13. Iron the interfacing to the wrong sides of the outer bag linen pieces.



14. On the upper main section, draw two lines to mark the boundary of the pockets: 5 3/4" in from each side and up 7 1/2" from the bottom.



15. Center the pocket between the drawn lines and baste the side and bottom edges.



16. Draw a line 1" out from each long side of the pocket.



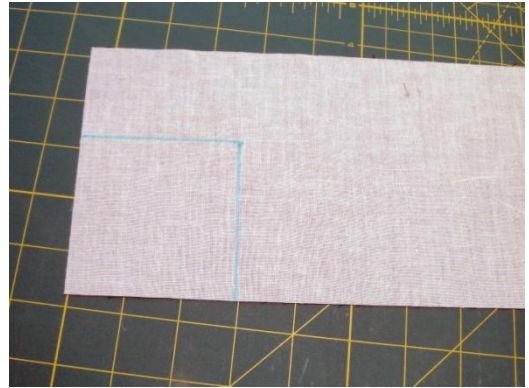
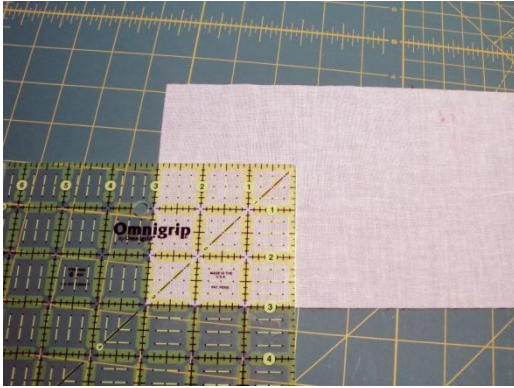
17. Place the strap along the edge of the drawn line. Your strap should overlap the foundation 1/4". If it is either more or less than that, adjust accordingly.



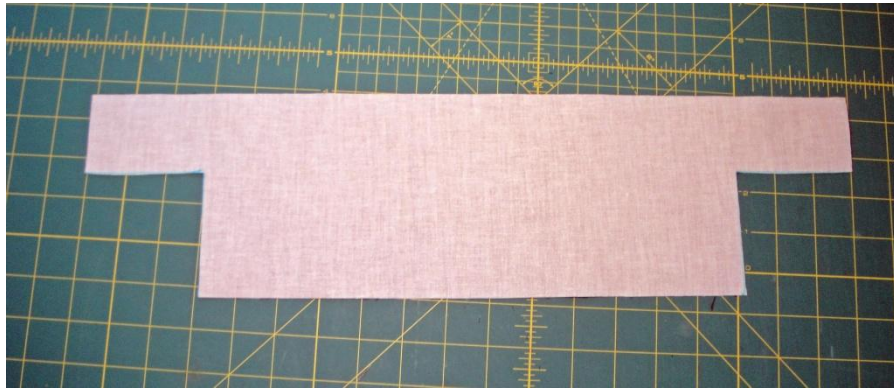
18. Stitch in place by sewing over the edging topstitch lines of the strap. Sew up one edge of the strap, sew across the strap even with the top edge of the pocket, and then sew down the other edge of the strap. Repeat along the other edge of the pocket.



19. Draw two 3" squares in the bottom corners of the bottom fabric.



20. Cut out the squares.



21. Place the long edge of the bottom fabric, right sides together, along the bottom edge of the upper section. Sew a quarter inch seam.



22. Press seam towards the bottom fabric and topstitch along the bottom fabric.



23. Repeat, using the other foundation pocket.

Making the Lining:

24. Draw three inch squares in the bottom of the lining fabric and the fusible fleece. Iron the fusible fleece onto the wrong side of the lining fabric – the fleece should be approximately one quarter-inch in from the edges of the lining fabric.



25. Draw a line 3 1/2" up from the bottom edge of the lining on the right side of the fabric.



26. Make the pockets:

- a. Fold the pocket fabric in half lengthwise, right sides together. Sew a quarter inch seam along the long edge. Turn right side out, press. Top stitch along the folded edge.
- b. Place the pocket with the top-stitched edge to the top and the bottom edge against the drawn line.



- c. Top stitch along the bottom edge of the pocket.
- d. Consider the divisions you would prefer for the pocket and sew vertical lines, from the bottom to the top edge of the pocket, to make the sections you prefer.

27. Repeat for the other lining half.

Bag Assembly: Seam allowances are 1/4".

28. Sew the lining and outer bag together along the top edge. (Make two of these, of course). I used a quarter inch seam. You can make yours a little wider if you would like: whatever seam allowance you decide will be the width of the faux binding. (Tip: I like to tuck the straps into the pockets so they are out of the way during the rest of the bag assembly). After sewing the seam, press open.



Place the two sections right sides together with the outer sections face to face. Sew along the bottom of the outer bag.



29. Press the seam open.



30. Sew the side seams of the bags together being sure to get as clean match along the sides where there are seam lines for the top and bottom of the outer bag and also at the seam where the outer bag and lining join. (Oops – forgot to take a picture of this step).

31. Box the bottom of the outer bag:

- a. Open the bottom and sides so that the cut out squares become a straight line and the bottom and side seams are matching. Sew with a quarter-inch seam, backstitch at beginning and end.

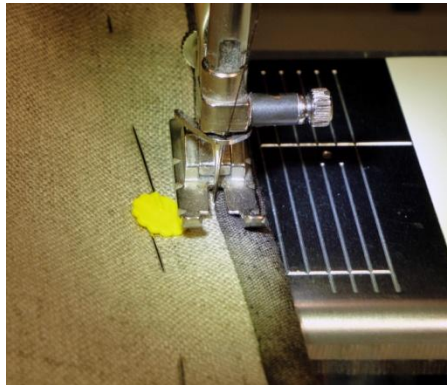


- b. Repeat for other side.

32. Sew the bottom seam of the lining, leaving a 6 inch gap in the middle for turning. (Okay, I could have *sworn* I took a photo of this but it is "poof, all gone." I have faith this is an easy enough step you don't really *need* a photo, now do you?)
33. Box the corners for the lining using the same method as you did for the outer bag.
34. Turn the bag right side out using the opening in the lining. (You're almost there!)
35. Fold the lining to the inside and pin in place. This creates the faux binding along the top edge.



36. Stitch in the ditch along the seam line.



37. Slip stitch the opening in the lining closed.
38. I did this last step later and I don't have a photo for it: I decided I didn't like the way the straps pulled when they were attached so low on the bag. I pinned them up in a straight line so that they crossed the binding and then sewed them into place by stitching along the seam line of the faux binding again.
39. One last task: Creating a sleeve for your stiffener of choice for the bag bottom.
 - a. Place the two rectangles right sides together. Sew along the two long sides and one of the short sides. (Leaving one short side open).
 - b. Turn right side out.

- c. Slide the stiffener of choice (matt board or Bag-E-Bottom) inside. Slip stitch the opening closed. Place inside the bottom of your bag.



And you're done!!! Enjoy your pretty new tote, inside and out.

